

NENNGELDAKTION FÜR DOPPELNENNUNG

REBENLAND UND LAVANTTAL RALLYE

NENNGELD PRO RALLYE FÜR DOPPELNENNUNG

KLASSE	NENNGELD PRO RALLYE bei Doppelnennung	GESAMTNENNGELD FÜR DOPPELNENNUNG
ORM Klassen 1-5	€ 750,-	€ 1.500,-
HRM, ORC, HRC, Klasse 9-11	€ 600,-	€ 1.200,-
Eingeschriebene Cups und Junioren außer (ORM Klasse 2 + RGT)	€ 550,-	€ 1.100,-

Preise für Nenngeld mit Veranstalterwerbung. Ohne Veranstalterwerbung doppeltes Nenngeld.
Das Nenngeld muss bis spätestens 12.02.2016 am Veranstalterkonto eingelangt sein!

Kontodaten: MSC-Wolfsberg Gerhard Leeb, Bank Austria Wolfsberg
 IBAN: AT621200060220675800, BIC: BKAUATWW

4x HEMD/BLUSE GRATIS!

Zusätzlich erhält jedes Team, welches eine Doppelnennung einreicht, je 2 Stk. kurzarm und 2 Stk. langarm Hemd/Bluse Marke Premier **inkl. Namensstick!**
 (Damen- und Herrenmodelle erhältlich! Normalpreis pro Stück: € 29,00 exkl. MwSt.)



Material: 105g/m², 65 Polyester, 35 Baumwolle

Herrenmodell

Klassischer Schnitt, verstärkter Kragen, Brusttasche links, bügelleicht, OEKO-TEX® Standard 100

Größen Herren: 37 - 49

Damenmodell

Taillierte Form, femininer Kragen, gerundeter Saum, ohne Brusttasche, bügelleicht, OEKO-TEX® Standard 100

Größen Damen: 34 - 54

Farben:



Die Namen müssen **bis spätestens 29.02. an caterina.leebe@leebe-group.at gemeldet werden**, damit diese rechtzeitig zur Rebenland Rallye fertiggestellt werden können. Weitere Hemden/Blusen können zum Sonderpreis von € 20,00 exkl. MwSt. erworben werden (Aktion gültig bis 01.04.2016). Sonderwünsche bezüglich Bestickung auf Anfrage: caterina.leebe@leebe-group.at



Foto Credits: Harald Illmer



REBENLAND RALLYE

18. - 19. MÄRZ 2016, LEUTSCHACH/STEIERMARK

Rund um die wunderschönen Strecken an der Südsteirischen Weinstraße in der Gemeinde Leutschach startet der Frühjahrsauftakt zur ORM 2016 mit der fünften Rebenland Rallye. Diese Rallye ist mit ihrem Verhältnis zwischen Gesamtstrecke und SP Kilometern die kompakteste in der ORM.

PRÄDIKATE

ORM, ORM 2WD, HRM, ORC, HRC
Mitropa Rallye Cup



INFORMATIONEN

Gesamtstrecke: 321,05 km
SP Länge: 169,69 km
Asphalt: 100 %
Nennbeginn: 02.02.2016
Nennschluss: 26.02.2016



www.rebenland-rallye.at

LAVANTTAL RALLYE

08. - 09. APRIL 2016, WOLFSBERG / KÄRNTEN

Die Rallye im Lavanttal ist der 2. Lauf der ORM und wird heuer zum 40. Mal durchgeführt. Rund um Wolfsberg werden wieder die selektiven und anspruchsvollen Sonderprüfung von den Teilnehmern in Angriff genommen.

PRÄDIKATE

ORM, ORM 2WD, HRM, ORC, HRC
Opel Rallye Cup
Mitropa Rallye Cup



INFORMATIONEN

Gesamtstrecke: 406,72 km
SP Länge: 191,66 km
Schotter: 10,47 %
Asphalt: 89,53 %
Nennbeginn: 10.02.2016
Nennschluss: 21.03.2016



www.lavanttal-rallye.at

	CARTON	PACK	TOTAL SKUS
SIZES 14.5" - 17.5"	36	6	210
SIZES 18"-22"	12	3	96



PR200 MEN'S LONG SLEEVE POPLIN SHIRT



Colour	Pantone	C	M	Y	K	Colour	Pantone	C	M	Y	K
Aqua	344	32	0	31	0	Natural	1205	0	5	31	0
Aubergine	5115	53	91	21	72	Navy	2766	100	87	0	34
Black	0	0	0	0	100	Orange	1655	0	65	87	0
Bottle	560	69	0	60	76	Pink	1895	0	30	6	0
Brown	476	30	72	74	84	Purple	269	82	98	5	26
Burgundy	216c	0	83	34	47	Red	200	0	100	65	15
Dark Grey	424	30	20	19	60	Rich Violet	2587	60	71	0	0
Emerald	341	100	0	69	30	Royal	286	100	60	0	6
Khaki	7503	0	12	35	25	Sapphire	300	99	51	0	0
Hot Pink	214c	0	100	24	4	Silver	428c	0	0	0	23
Light Blue	2708	3	4	9	0	Strawberry Red	186	2	100	82	6
Lilac	264	27	30	0	0	Steel	7545	56	30	17	52
Mocha	7505	17	44	59	51	Sunflower	136c	0	27	79	0
Lime	382	29	0	96	0	Turquoise	312	89	0	11	0
Mid Blue	2718	72	43	0	0	White	White	0	0	0	0

Fabric

65%/35% Polyester/Cotton, Plain Poplin weave. 105gsm

Colours

Aubergine, Aqua, Black, Brown, Burgundy, Bottle, Dark Grey, Emerald, Hot Pink, Khaki, Light Blue, Lilac, Lime, Mocha, Mid Blue, Natural, Navy, Pink, Purple, Orange, Red, Rich Violet, Royal, Sapphire, Strawberry Red, Silver, Steel, Sunflower, Turquoise, White

Sizes

14½, 15, 15½, 16, 16½, 17, 17½, 18, 18½, 19, 20, 21, 22 (Black and White only)

Features

- Stiffened formal cut collar
- Left breast open mitred pocket
- Long sleeves with button fastened cuffs
- Cuffs will also fit cufflinks
- Easy care
- Complements ladies' style PR305 / PR300
- Made from OEKO-TEX® Standard 100 Fabric

Country of Origin

Bangladesh

Carton Dimensions

36 cm x 57 cm x 57 cm

Carton Weight

8.35 kg approx.

VAT Code

6205 30 0000

Collar "	14½	15	15½	16	16½	17	17½	18	18½	19	20	21	22
Collar cm	37	38	39½	41	42	43	44½	46	47	48	51	53	56
Chest to fit "	34	36	38	40	42	44	46	48	50	52	54	56	58
Chest to fit cm	86.5	91.5	96.5	101.5	106.5	111.5	116.5	121.5	126.5	131.5	136.5	141.5	146.5
Call size	S	S/M	M	M/L	L	L/XL	XL	2XL	3XL	4XL	5XL	6XL	7XL
Chest actual cm	109	114	119	124	129	134	139	144	149	154	159	164	169
DE,NL	36	38	38-40	40-42	42	44	44-46	46	46-48	48	50	52	54
FR,ES,PT	36	36-38	38	38-40	40	40-42	42	42-44	44	44-46	46	46-48	48

Marketing Description

A men's long sleeve Poplin shirt available in thirty colours. This classic work shirt has a stiffened formal cut collar and a left breast open mitred pocket. The long sleeve style has button fastened cuffs making for a smart and stylish shirt.



WASH DARK COLOURS SEPARATELY, WASH INSIDE OUT, DO NOT SOAK, DO NOT DRY CLEAN

	CARTON	PACK	TOTAL SKUS
SIZES 6 - 20	36	6	240
SIZES 22 - 26	12	3	90



PR302

LADIES' SHORT SLEEVE POPLIN BLOUSE



Colour	Pantone	C	M	Y	K	Colour	Pantone	C	M	Y	K
Aqua	344	32	0	31	0	Natural	1205	0	5	31	0
Aubergine	5115	53	91	21	72	Navy	2766	100	87	0	34
Black	0	0	0	0	100	Orange	1655	0	65	87	0
Bottle	560	69	0	60	76	Pink	1895	0	30	6	0
Brown	476	30	72	74	84	Purple	269	82	98	5	26
Burgundy	216c	0	83	34	47	Red	200	0	100	65	15
Dark Grey	424	30	20	19	60	Rich Violet	Xx	Xx	Xx	Xx	xx
Emerald	341	100	0	69	30	Royal	286	100	60	0	6
Khaki	7503	0	12	35	25	Sapphire	300	99	51	0	0
Hot Pink	214c	0	100	24	4	Silver	428c	0	0	0	23
Light Blue	2708	3	4	9	0	Strawberry Red	186	2	100	82	6
Lilac	264	27	30	0	0	Steel	7545	56	30	17	52
Mocha	7505	17	44	59	51	Sunflower	136c	0	27	79	0
Lime	382	29	0	96	0	Turquoise	312	89	0	11	0
Mid Blue	2718	72	43	0	0	White	White	0	0	0	0

Fabric

Colours 105gsm, (White 115gsm) 65%/35% Polyester/Cotton, Plain Poplin

Colours

Aubergine, Aqua, Black, Brown, Burgundy, Bottle, Dark Grey, Emerald, Hot Pink, Khaki, Light Blue, Lilac, Lime, Mocha, Mid Blue, Natural, Navy, Pink, Purple, Orange, Red, Rich Violet, Royal, Sapphire, Strawberry Red, Silver, Steel, Sunflower, Turquoise, White

Sizes

6, 8, 10, 12, 14, 16, 18, 20, 22, 24, 26

Features

- Ladies' short sleeve easy care poplin blouse
- Soft collar styling
- Rounded bottom hem
- Fitted styling with bust darts & back darts
- Easy care fabric
- Short sleeves
- Pearlised buttons on light blue & white
- Self colour buttons on remaining colours
- Complements men's style PR202
- Made from OEKO-TEX® Standard 100 Fabric

Country of Origin

Bangladesh

Carton Dimensions

40 cm x 17 cm 58 cm

Carton Weight

7.29 kg approx.

VAT Code

6206 400000

Size	6	8	10	12	14	16	18	20	22	24	26
Collar cm	39	40	41	42 1/2	44	45 1/2	47	48 1/2	50	51 1/2	53
Bust to fit "	31	33	35	37	39	41	43	45	47	49	51
Bust to fit cm	79	84	89	94	99	104	109	114	119	124	129
Call size	2XS	XS	S	M	L	XL	2XL	3XL	4XL	5XL	6XL
Bust actual cm	89	94	99	104	109	114	119	124	129	134	139
DE,NL	34	36	38	40	42	44	46	48	50	52	54
FR,ES,PT	34	36	38	40	42	44	46	48	50	52	54
IT	38	40	42	44	46	48	50	52	54	56	58

Marketing Description

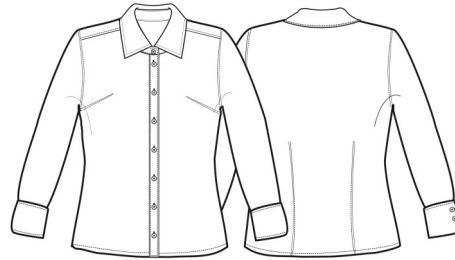
A ladies short sleeve blouse with semi fitted styling, available in thirty colours. The blouse features soft collar styling with bust and back darts and a rounded bottom hem for a really attractive piece of workwear.



WASH DARK COLOURS SEPARATELY, WASH INSIDE OUT.

	CARTON	PACK	TOTAL SKUS
SIZES 6 - 20	36	6	240
SIZES 22 - 26	12	3	190

PR300 LADIES' LONG SLEEVE POPLIN BLOUSE



Colour	Pantone	C	M	Y	K	Colour	Pantone	C	M	Y	K
Aqua	344	32	0	31	0	Natural	1205	0	5	31	0
Aubergine	5115	53	91	21	72	Navy	2766	100	87	0	34
Black	0	0	0	0	100	Orange	1655	0	65	87	0
Bottle	560	69	0	60	76	Pink	1895	0	30	6	0
Brown	476	30	72	74	84	Purple	269	82	98	5	26
Burgundy	216c	0	83	34	47	Red	200	0	100	65	15
Dark Grey	424	30	20	19	60	Rich Violet	2587	60	71	0	0
Emerald	341	100	0	69	30	Royal	286	100	60	0	6
Khaki	7503	0	12	35	25	Sapphire	300	99	51	0	0
Hot Pink	214c	0	100	24	4	Silver	428c	0	0	0	23
Light Blue	2708	3	4	9	0	Strawberry Red	186	2	100	82	6
Lilac	264	27	30	0	0	Steel	7545	56	30	17	52
Mocha	7505	17	44	59	51	Sunflower	136c	0	27	79	0
Lime	382	29	0	96	0	Turquoise	312	89	0	11	0
Mid Blue	2718	72	43	0	0	White	White	0	0	0	0

Fabric

Colours 105gsm, (White 115gsm) 65%/35% Polyester/Cotton, Plain Poplin weave

Colours

Aubergine, Aqua, Black, Brown, Burgundy, Bottle, Dark Grey, Emerald, Hot Pink, Khaki, Light Blue, Lilac, Lime, Mocha, Mid Blue, Natural, Navy, Pink, Purple, Orange, Red, Rich Violet, Royal, Sapphire, Strawberry Red, Silver, Steel, Sunflower, Turquoise, White

Sizes

6, 8, 10, 12, 14, 16, 18, 20, 22, 24, 26

Features

- Ladies' easy care long sleeve blouse
- Soft collar styling
- Rounded bottom hem
- Complements men's style PR200
- Fitted styling with bust and back darts
- Pearlised buttons on light blue and white shirt, self colour buttons on remaining
- Double buttons on cuff
- Made from OEKO-TEX® Standard 100 Fabric

Country of Origin

Bangladesh

Carton Dimensions

40 cm x 17 cm 58 cm

Carton Weight

8.35 kg approx.

VAT Code

6206 40 0000

Size	6	8	10	12	14	16	18	20	22	24	26
Collar cm	39	40	41	42 1/2	44	45 1/2	47	48 1/2	50	51 1/2	53
Bust to fit "	31	33	35	37	39	41	43	45	47	49	51
Bust to fit cm	79	84	89	94	99	104	109	114	119	124	129
Call size	2XS	XS	S	M	L	XL	2XL	3XL	4XL	5XL	6XL
Bust actual cm	89	94	99	104	109	114	119	124	129	134	139
DE,NL	34	36	38	40	42	44	46	48	50	52	54
FR,ES,PT	34	36	38	40	42	44	46	48	50	52	54
IT	38	40	42	44	46	48	50	52	54	56	58

Marketing Description

An stylish long sleeve ladies blouse that comes in thirty colours. This blouse offers the wearer a semi fitted feminine styling with a soft collar, bust, back darts and a rounded bottom hem.



WASH DARK COLOURS SEPARATELY, WASH INSIDE OUT, DO NOT SOAK,

PR202

MEN'S SHORT SLEEVE POPLIN SHIRT

	CARTON	PACK	TOTAL SKUS
SIZES 14.5"-17.5"	36	6	210
SIZES 18"-22"	12	3	96



Colour	Pantone	C	M	Y	K	Colour	Pantone	C	M	Y	K
Aqua	344	32	0	31	0	Natural	1205	0	5	31	0
Aubergine	5115	53	91	21	72	Navy	2766	100	87	0	34
Black	0	0	0	0	100	Orange	1655	0	65	87	0
Bottle	560	69	0	60	76	Pink	1895	0	30	6	0
Brown	476	30	72	74	84	Purple	269	82	98	5	26
Burgundy	216c	0	83	34	47	Red	200	0	100	65	15
Dark Grey	424	30	20	19	60	Rich Violet	Xx2587	60	71	0	0
Emerald	341	100	0	69	30	Royal	286	100	60	0	6
Khaki	7503	0	12	35	25	Sapphire	300	99	51	0	0
Hot Pink	214c	0	100	24	4	Silver	428c	0	0	0	23
Light Blue	2708	3	4	9	0	Strawberry Red	186	2	100	82	6
Lilac	264	27	30	0	0	Steel	7545	56	30	17	52
Mocha	7505	17	44	59	51	Sunflower	136c	0	27	79	0
Lime	382	29	0	96	0	Turquoise	312	89	0	11	0
Mid Blue	2718	72	43	0	0	White	White	0	0	0	0



Fabric

65%/35% Polyester/Cotton, Plain Poplin weave, 105gsm

Colours

Aubergine, Aqua, Black, Brown, Burgundy, Bottle, Dark Grey, Emerald, Hot Pink, Khaki, Light Blue, Lilac, Lime, Mocha, Mid Blue, Natural, Navy, Pink, Purple, Orange, Red, Rich Violet. Royal,

Sizes

14½, 15, 15½, 16, 16½, 17, 17½, 18, 18½, 19, 20, 21, 22 (Black and White only)

Features

- Stiffened formal cut collar
- Left breast open mitred pocket
- Short Sleeves
- Easy care
- Self colour buttons on coloured shirts
- Complements ladies' style PR302
- Made from OEKO-TEX® Standard 100 Fabric

Country of Origin

Bangladesh

Carton Dimensions

36 cm x 57 cm 57 cm

Carton Weight

7.88 kg approx.

VAT Code

6205 30 0000

Collar "	14½	15	15½	16	16½	17	17½	18	18½	19	20	21	22
Collar cm	37	38	39½	41	42	43	44½	46	47	48	51	53	56
Chest to fit "	34	36	38	40	42	44	46	48	50	52	54	56	58
Chest to fit cm	86.5	91.5	96.5	101.5	106.5	111.5	116.5	121.5	126.5	131.5	136.5	141.5	146.5
Call size	S	S/M	M	M/L	L	L/XL	XL	2XL	3XL	4XL	5XL	6XL	7XL
Chest actual cm	109	114	119	124	129	134	139	144	149	154	159	164	169
DE,NL	36	38	38-40	40-42	42	44	44-46	46	46-48	48	50	52	54
FR,ES,PT	36	36-38	38	38-40	40	40-42	42	42-44	44	44-46	46	46-48	48

Marketing Description

A short sleeve work shirt for men available in thirty colours. This shirt has a stiffened formal cut collar that can accommodate a tie and the main body has a useful left breast pocket



WASH DARK COLOURS SEPARATELY, WASH INSIDE OUT, DO NOT SOAK, DO NOT DRY CLEAN